

HIGHWAY 1 COLQUITZ BRIDGES PROJECT INFORMATION & UPDATES

April 9, 2026



PROJECT OVERVIEW

The Highway 1-Colquitz River Bridges Widening project will widen and seismically retrofit both existing two-lane bridges over Burnside Road on Highway 1 in Victoria, as well as establish a dedicated bus-on-shoulder lane. Widening the Colquitz River bridges will make for a more reliable, efficient commute for south Islanders while protecting local waterways and ecosystems. The Project will provide environmental enhancements by planting native trees, removing invasive species and treating highway runoff via a rain garden before discharging into the Colquitz River. Pomerleau Inc was awarded the construction contract in March 2024 for the project.

PROJECT UPDATES

March works focused on the ongoing North and South bridge construction and maintaining safe traffic flow through the corridor. Traffic management and lane shifts remained in place to support ongoing works, along with continued environmental protection and site cleanup. On the South Bridge, crews completed abutment and approach works, including final backfilling of cured concrete. Work continued for the South Bridge deck works. With the Burnside Road sidewalk concrete poured, all concrete pouring for the project is complete.

1 MONTH LOOKAHEAD

The following construction activities are anticipated to begin/continue over the next month:

- Ongoing civil works for the Burnside Road gravel path, including drain installation and hydroseeding.
- Jersey barrier placement, tree planting, and hydroseeding throughout the project area.
- Highway 1 bus stop railing installation.
- Begin removal and reinstatement of the median crossover that was used for traffic control throughout the project.

PROTECTION OF THE ENVIRONMENT

Environmental protection measures remained in place throughout March, with ongoing monitoring along the Colquitz River. A third-party environmental audit was completed on April 2nd, 2026 and included in-stream water quality monitoring upstream, downstream, and adjacent to the Project area. Monitoring results confirmed the Project continues to meet turbidity requirements, and construction activities have not affected river water quality.

The Peninsula Streams Society (PSS) began their restoration planting and enhancement works scope by removing invasive species within the riparian area, including blackberry bushes shown in Figure 1. PSS also installed their Smolt Trap in the Colquitz River this month. The Smolt Trap (Figure 2) is used to count out-migrating salmon smolts and track their movements. Understanding where the salmon spend their time at different life stages will help inform further restoration efforts and will contribute towards a better understanding of coho and cutthroat within the river system.



Figure 1: Blackberry bushes removed by PSS

HIGHWAY 1 COLQUITZ BRIDGES PROJECT INFORMATION & UPDATES

April 9, 2026



Figure 2: Smolt Trap installed by PSS



Figure 3: South bridge concrete placement

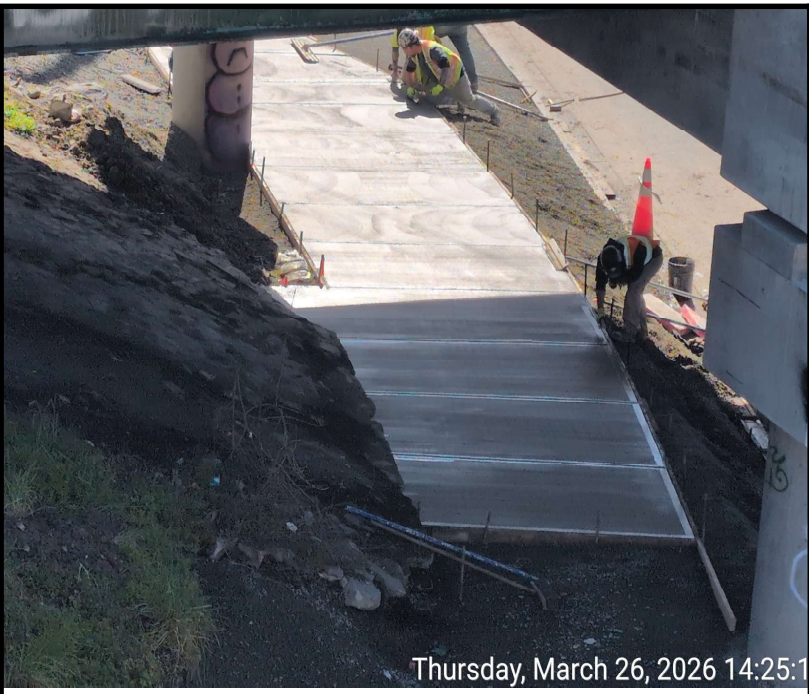


Figure 4: Burnside road concrete sidewalk

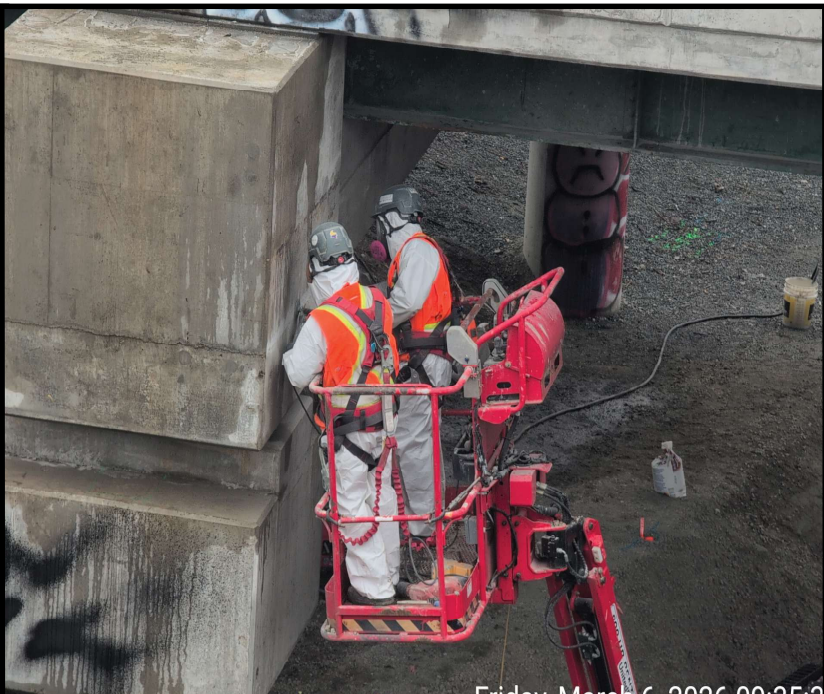


Figure 5: Concrete finishing works at North bridge