

# HIGHWAY 1 COLQUITZ BRIDGES PROJECT INFORMATION & UPDATES

April 4, 2025



## PROJECT OVERVIEW

The Highway 1-Colquitz River Bridges Widening project will widen and seismically retrofit both existing two-lane bridges over Burnside Road on Highway 1 in Victoria, as well as establish a dedicated bus-on-shoulder lane. Widening the Colquitz River bridges will make for a more reliable, efficient commute for south Islanders while protecting local waterways and ecosystems. The Project will provide environmental enhancements by planting native trees, removing invasive species and treating highway runoff via a rain garden before discharging into the Colquitz River. Pomerleau Inc was awarded the construction contract in March 2024 for the project.

## PROJECT UPDATES

Construction activities continue to progress onsite, including ongoing widening work on the South and North Colquitz Bridges. The construction crew has continued works for the South Bridge deck work, including concrete pouring and curing for the parapet and approach slab. At the North Bridge, works continued for the new Bent installation and preparation for the deck work. Works continued along the Western Median, including sawcutting and removal of existing asphalt, and grading with granular materials.

## 1 MONTH LOOKAHEAD

The following construction activities are anticipated to begin/continue over the next month:

- Preparation for opening a third lane along the North Bridge.
- Paving Western median shoulder.
- Ongoing work for the North Bridge B1 and B2 bents, as well as the North Bridge deck works.
- Lane closures, traffic control and temporary crosswalk along Burnside Road West.

## PROTECTION OF THE ENVIRONMENT

Regular third-party environmental audits are being conducted throughout construction. The latest audit conducted on March 20th, 2025, included in-situ water quality monitoring and noted the project was in compliance with turbidity levels from measurements conducted upstream, downstream, and adjacent to the Project. Tree clearing for the Project was conducted prior to nesting season, and trees will be replanted prior to the end of construction.

The Peninsula Streams Society have installed their Smolt Trap in the Colquitz River this month. The Smolt Trap is used to count out-migrating salmon smolts and track their movements. Understanding where the salmon spend their time at different life stages will help inform further restoration efforts and will contribute towards a better understanding of coho and cutthroat within the river system.

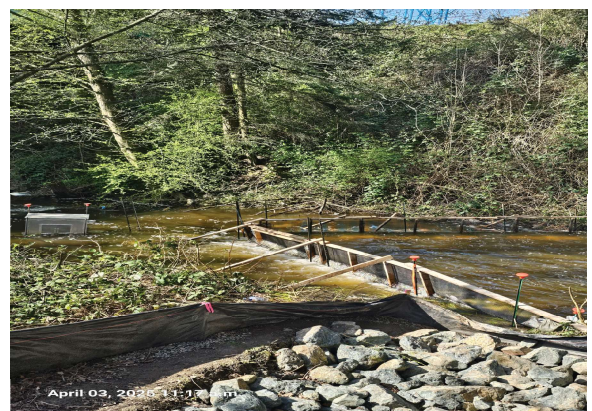


Figure 1: Smolt Trap in the Colquitz River



# HIGHWAY 1 COLQUITZ BRIDGES PROJECT INFORMATION & UPDATES

April 4, 2025



Figure 2: Works Along West Median on Highway 1



Figure 3: Highway 1 Grading Works  
**\*Clearing was done prior to nesting season, and trees will be replanted prior to the end of construction\***



Figure 4: Installation of Smolt Trap



Figure 5: Heating and Hoarding for Concrete Curing