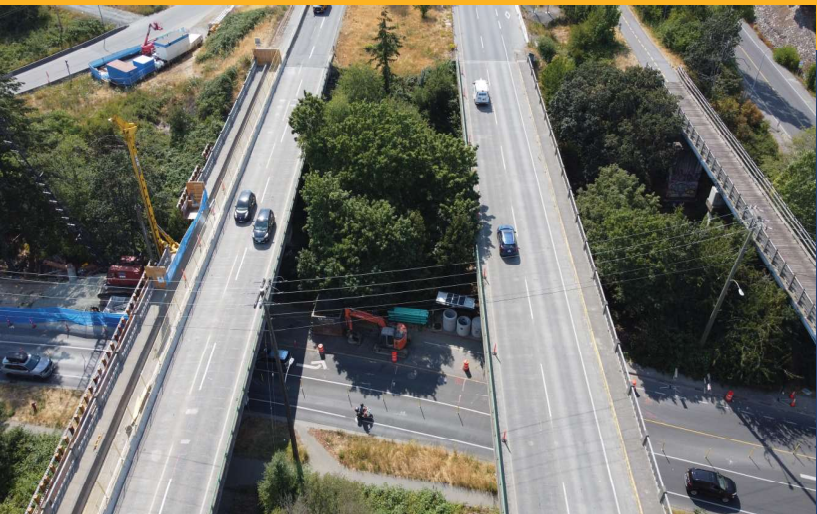


HIGHWAY 1 COLQUITZ BRIDGES PROJECT INFORMATION & UPDATES February 18, 2025



PROJECT OVERVIEW

The Highway 1-Colquitz River Bridges Widening project will widen and seismically retrofit both existing two-lane bridges over Burnside Road on Highway 1 in Victoria, as well as establish a dedicated bus-on-shoulder lane. Widening the Colquitz River bridges will make for a more reliable, efficient commute for south Islanders while protecting local waterways and ecosystems. The Project will provide environmental enhancements by planting native trees, removing invasive species and treating highway runoff via a rain garden before discharging into the Colquitz River. Pomerleau Inc was awarded the construction contract in March 2024 for the project.

PROJECT UPDATES

Construction activities continue to progress onsite, including ongoing widening work on the South and North Colquitz Bridges. All piling works for the project have been completed. The construction crew has continued works for the South Bridge deck extension, including concrete pouring and curing. At the North Bridge, works continued for the installation of the new Bent, including installation of formwork and rebar in anticipation of concrete pouring. Works occurred along the Western Median, including additional clearing and grubbing and asphalt removals.

1 MONTH LOOKAHEAD

The following construction activities are anticipated to begin/continue over the next month:

- South Bridge concrete curing for the deck work.
- Commencement on the South Bridge parapet.
- Ongoing work for the North Bridge B1 and B2 bents.
- Lane closures, traffic control and temporary crosswalk along Burnside Road West.

PROTECTION OF THE ENVIRONMENT

Regular third-party environmental audits are being conducted throughout construction. The latest audit conducted on February 13th, 2025, included in-situ water quality monitoring and noted the project was in compliance with turbidity levels from measurements conducted midway and downstream of the project.

Tree clearing occurred during the first week of February in the median of Highway 1 west of Colquitz River. This clearing was part of the original design and plan of the project. All trees removed in the median will be replaced with native trees as part of this project.

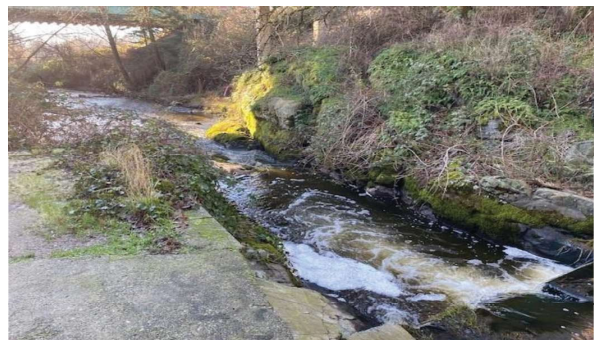


Figure 1: Location of Colquitz River Upper Water Quality Monitoring Station

HIGHWAY 1 COLQUITZ BRIDGES PROJECT INFORMATION & UPDATES

February 18, 2025



Figure 2: Work Along North Bridge Bent



Figure 3: Works Along West Median on Highway 1



Figure 4: Traffic Management Along Burnside Road



Figure 5: Silt Fencing Along Multi-Use Path